

## All the information you need to deploy Neovest at your firm.

### [Neovest \(Desktop\) installation guide](#)

[Pages 02 - 06](#)

Step by step walkthrough of the Neovest installation wizard.

### [System requirements & firewall setup](#)

[Pages 07 - 10](#)

Recommended PC hardware specifications.

Ports and IPs you will have to open on your firewall to connect.

Remote Router Servers (RRS) specifications.

### [How to access UAT](#)

[Pages 11 - 12](#)

Instructions to log into the Neovest simulation environment.

**New York | Orem | London | Hong Kong | Singapore | Sydney**

Step by step walkthrough of the Neovest desktop installation

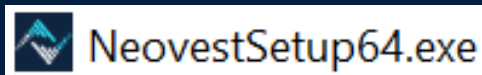
## Step 1: Download the Neovest installer

To download the Neovest installer from our secured website please click on the link below:

[support.neovest.com](https://support.neovest.com)

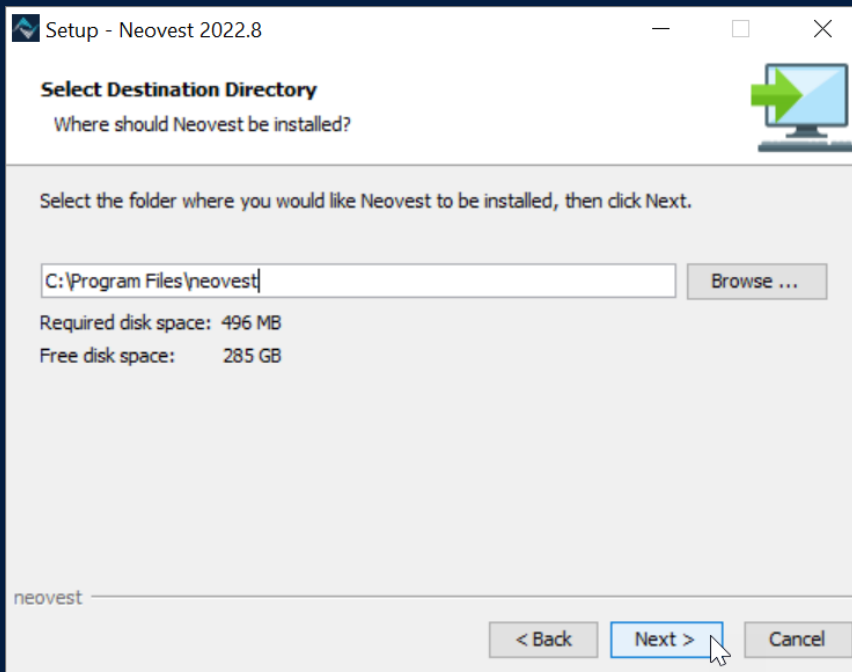
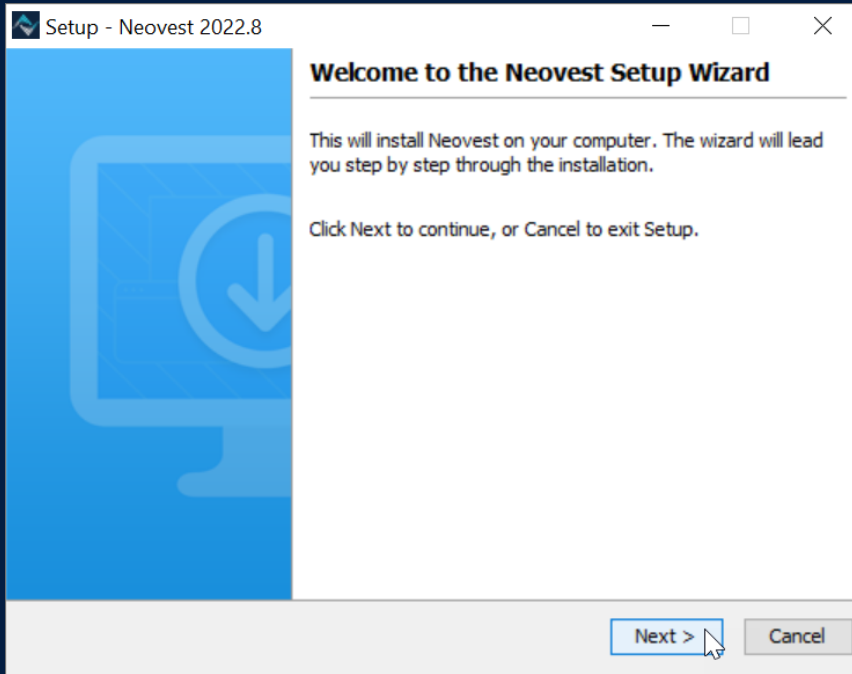
## Step 2: Run the installer

The Neovest installer should be run by a user that has “administrator” rights on the machine.

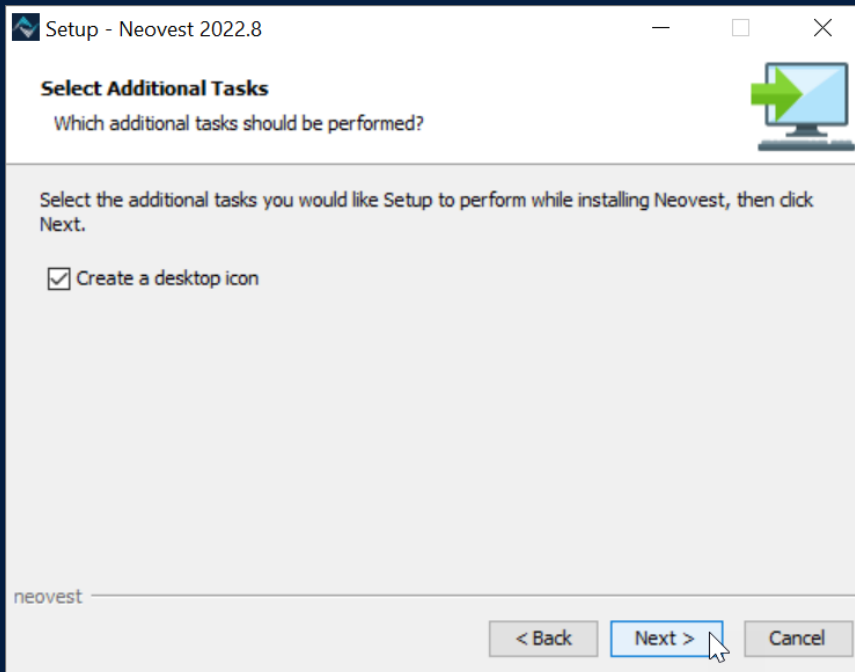
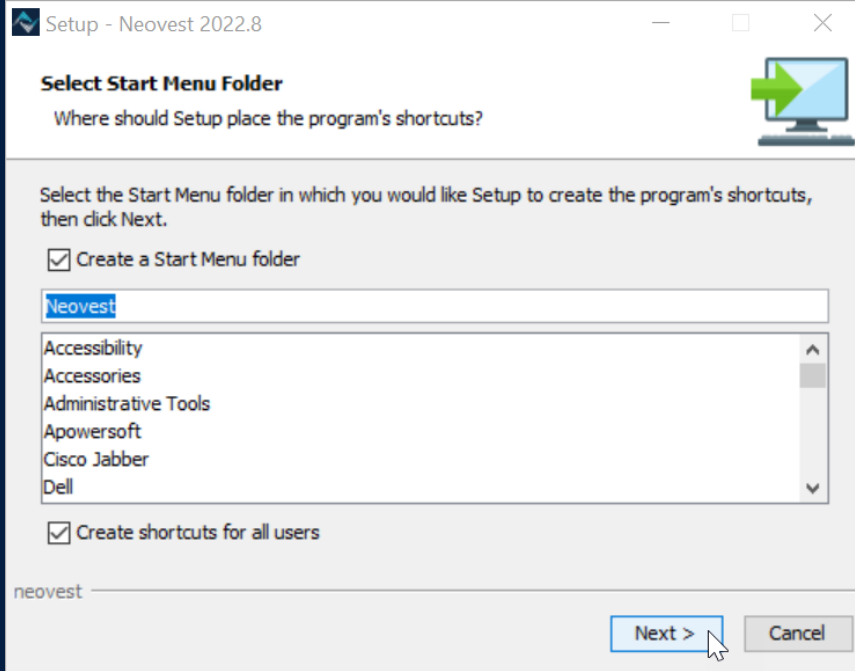


**New York | Orem | London | Hong Kong | Singapore | Sydney**

Below is a step by step view of the Neovest installation wizard.

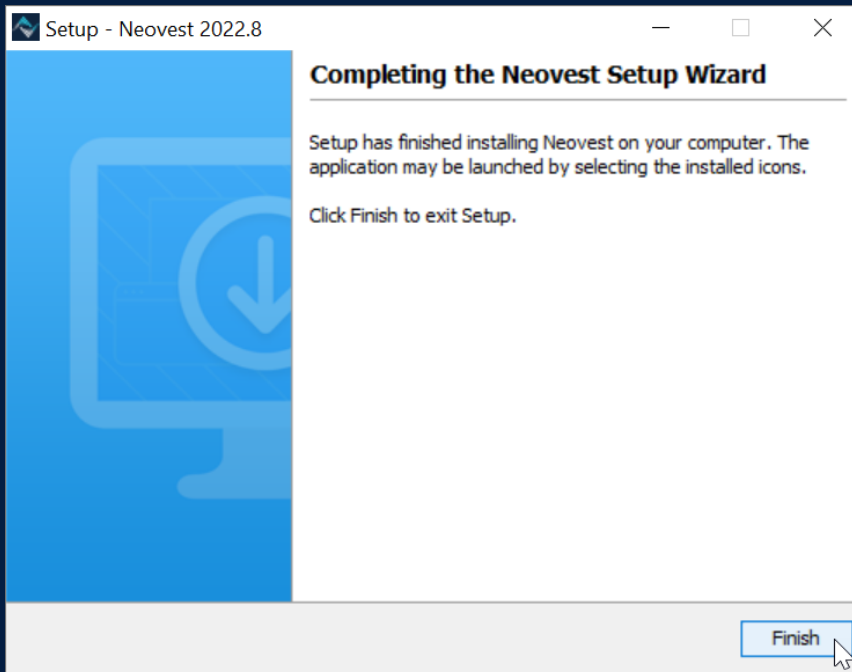
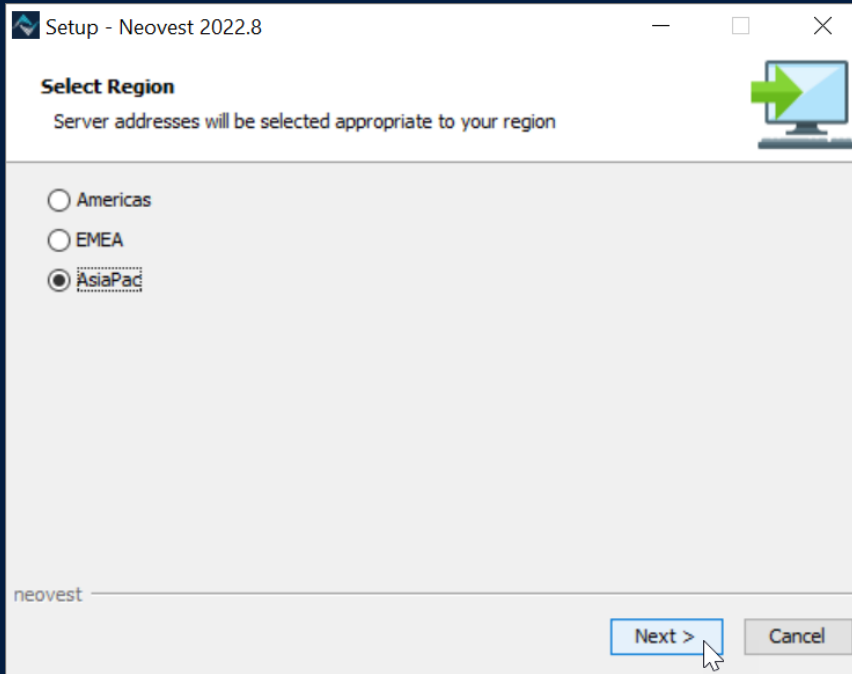


**New York | Orem | London | Hong Kong | Singapore | Sydney**



**New York | Orem | London | Hong Kong | Singapore | Sydney**

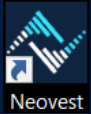
Please select the region that is closest to the location of the user.




**New York | Orem | London | Hong Kong | Singapore | Sydney**

## Step 3: Login into production

You should now see a Neovest icon on your desktop.



Once you launch Neovest a login window will appear.


 A screenshot of the Neovest login window. The window title is 'Neovest 2022.8.1.3'. The main content area features the Neovest logo and the word 'NEOVEST' in large white letters. Below this, there are three input fields: 'User Name' with the text 'user.name', 'Password' (empty), and 'Domain' with the text 'Idealink'. A blue link 'Reset Password?' is positioned below the domain field. At the bottom, there are three buttons: 'Logon' (highlighted with a mouse cursor), 'Cancel', and 'Setup...'. At the very bottom of the window, there is a footer that reads 'Select market data provided by ICE Data Services.' followed by a blue link 'Privacy Policy'.

The **User Name** and **Domain** will be provided by the Neovest team during onboarding.

The **Password** is set by the users themselves during the onboarding process. An email will be sent to them privately, inviting them to create their password and set up security questions.

**New York | Orem | London | Hong Kong | Singapore | Sydney**

## System Requirements

Client machines must have the following specifications.

### Recommended:

- ✓ Windows 10 (64-bit)
- ✓ Intel quad-core i7 or better
- ✓ 16GB RAM
- ✓ 5GB free Disk Space
- ✓ 30M Available Bandwidth to our datacenter(s)\*

\*Dedicated bandwidth – amount depends on usage. Quant or basket trading firms should contact us to discuss bandwidth requirements.

**New York | Orem | London | Hong Kong | Singapore | Sydney**

## Firewalls - Production

To access Neovest's production datacentres the following ports must be open.

The following IP addresses will need to be opened on **Port 5600**.

IP	Host	Port	Location
<b>199.36.68.10</b>	directfeed2.neovest.com	5600	United States
<b>199.36.71.10</b>	directfeed.neovest.com	5600	United States
<b>205.217.20.201</b>	ukdirectfeed.neovest.com	5600	United Kingdom
<b>27.111.203.4</b>	hkdirectfeed.neovest.com	5600	Hong Kong

The following IP addresses will need to be opened on **Ports 9793, 9794 & 9797**.

IP	Host	Port	Location
<b>199.36.68.14</b>	savoe1.neovest.com	9793 9794	United States
<b>199.36.68.15</b>	savoe2.neovest.com	9793 9794 9797	United States
<b>199.36.71.15</b>	oe.us2.neovest.com	9793 9794	United States
<b>205.217.20.202</b>	ukoe.neovest.com	9793 9794	United Kingdom
<b>27.111.203.6</b>	hkoe.neovest.com	9793 9794 9797	Hong Kong

HTML content will go over https port **443** with **\*.prod.neovest.com** DNS.

**New York | Orem | London | Hong Kong | Singapore | Sydney**



## Firewalls – UAT

To connect to the Neovest UAT/Simulation environment, the following IP addresses will need to be opened on **Port 5600**.

IP	Host	Port	Location
<b>199.36.68.141</b>	directfeedsim.neovest.com	5600	United States

To connect to the Neovest UAT/Simulation environment, the following IP addresses will need to be opened on **Port 9798**.

IP	Host	Port	Location
<b>199.36.68.16</b>	oesim.neovest.com	9798	United States

HTML content will go over https port **443** with **\*.sim.neovest.com** DNS.

**New York | Orem | London | Hong Kong | Singapore | Sydney**

## Remote Router Server (RRS) – System Requirements

### Recommended:

- ✓ Windows Server 2016 R2 64-bit
- ✓ 16GB+ RAM
- ✓ Xeon processor with 8 cores
- ✓ 100GB available disk space
- ✓ Physical Server with Hyperthreading disabled

For additional information, please contact your account manager or

[support@neovest.com](mailto:support@neovest.com)

**Americas** +1 800 433 4276

**EMEA** +44 808 189 0330

**APAC** +852 800 906 160

**New York | Orem | London | Hong Kong | Singapore | Sydney**

## Login into Neovest' s UAT/simulation environment

UAT/simulation logins allow users to submit dummy orders to get used to the look and feel of Neovest.

Please contact your Neovest account manager if you need access to UAT/simulation logins.

To login into UAT/simulation you will have to set your Neovest to point towards our UAT servers.

Upon launching Neovest click on "Setup".



**New York | Orem | London | Hong Kong | Singapore | Sydney**

Select **Simulated Trading**.

Populate the **Host** and **Port** details as per below and click "OK".

### Authentication Server

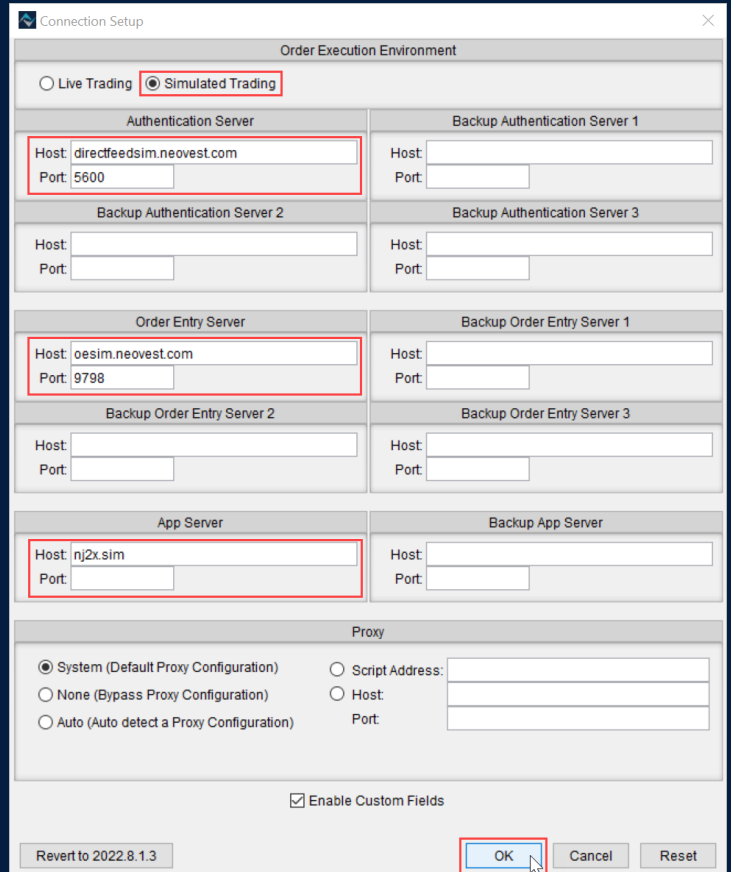
Host: directfeedsim.neovest.com  
Port: 5600

### Order Entry Server

Host: oesim.neovest.com  
Port: 9798

### App Server

Host: nj2x.sim  
Port: No port is needed



Neovest will now state **Simulated Trading Environment** in red on the login window.

You are ready to login into simulation.



**New York | Orem | London | Hong Kong | Singapore | Sydney**